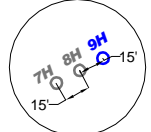


SCALE 1"=1000'

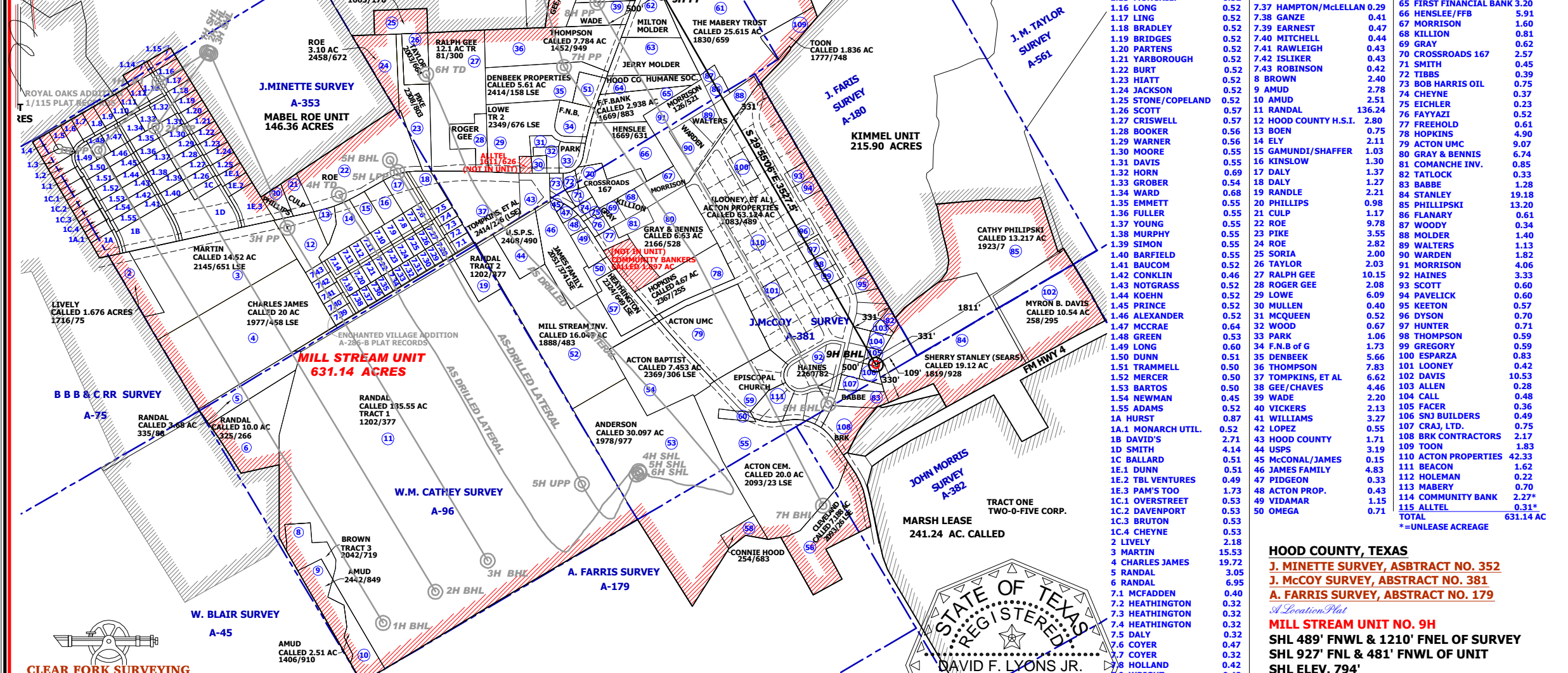
BEARINGS BASED ON SPCS NAD83 TN CZ

1000' 0 1000' 2000'



WELLBORE INSET NOT TO SCALE

NORTH



1.1 PEER	0.52	PLAT NO. G85-110113-3B, ACTON83.CRD, QR_MILL_STREAM_9H_R1.DWG	51 SAWYER	1.22
1.2 GIBSON	0.56		52 MILL STREAM	15.62
1.3 ROGERS	0.49		53 ANDERSON	29.77
1.4 HIDALGO	0.55		54 ACTON BAPTIST	8.11
1.5 PYRON	0.51		55 ACTON CEMETARY	18.39
1.6 GILMORE	0.52		56 CLEVELAND	7.59
1.7 BUTLER	0.52		57 HEATHINGTON	3.13
1.8 DEWALD	0.52		58 HOOD	1.00
1.9 O'CONNOR	0.52		59 EPISCOPAL CHURCH	3.72
1.10 CHESTNUT	0.52		60 EPISCOPAL CHURCH	0.48
1.11 TALMAGE	0.52		61 THE MABERY TRUST	25.95
1.12 DITTLINGER	0.52		62 MILTON MOLDER	3.35
1.13 WINTERS	0.73		63 JERRY MOLDER	4.42
1.14 JARMAN	0.52		64 HOOD CO. HUM. SOC.	2.12
1.15 MONCRIEF	0.52		65 FIRST FINANCIAL BANK	3.20
1.16 LONG	0.52		66 HENSLEE/FFB	5.91
1.17 LING	0.52		67 MORRISON	1.60
1.18 BRADLEY	0.52		68 KILLION	0.81
1.19 BRIDGES	0.52		69 GRAY	0.62
1.20 PARTENS	0.52		70 CROSSROADS 167	2.57
1.21 YARBOROUGH	0.52		71 SMITH	0.45
1.22 BURT	0.52		72 TIBBS	0.39
1.23 HIATT	0.52		73 BOB HARRIS OIL	0.75
1.24 JACKSON	0.52		74 CHEYNE	0.37
1.25 STONE/COPELAND	0.52		75 EICHLER	0.23
1.26 SCOTT	0.57		76 FAYYAZI	156.24
1.27 CRISWELL	0.57		77 FREEHOLD	0.61
1.28 BOOKER	0.56		78 HOPKINS	4.90
1.29 WARNER	0.56		79 ACTON UMC	9.07
1.30 MOORE	0.55		80 GRAY & BENNIS	6.74
1.31 DAVIS	0.55		81 COMANCH INV.	0.85
1.32 HORN	0.69		82 TATLOCK	0.33
1.33 GROBER	0.54		83 BABBE	1.28
1.34 WARD	0.68		84 STANLEY	19.18
1.35 EMMETT	0.55		85 PHILLIPSKI	13.20
1.36 FULLER	0.55		86 FLANARY	0.61
1.37 YOUNG	0.55		87 WOODY	0.34
1.38 MURPHY	0.55		88 MOLDER	1.40
1.39 SIMON	0.55		89 WALTERS	1.13
1.40 BARFIELD	0.55		90 WARDEN	1.82
1.41 BAUCOM	0.52		91 MORRISON	4.06
1.42 CONKLIN	0.46		92 HAINES	3.33
1.43 NOTGRASS	0.52		93 SCOTT	0.60
1.44 KOEHN	0.52		94 PAVELICK	0.60
1.45 PRINCE	0.52		95 KEETON	0.57
1.46 ALEXANDER	0.52		96 DYSON	0.70
1.47 MCCRAE	0.64		97 HUNTER	0.71
1.48 GREEN	0.53		98 THOMPSON	0.59
1.49 LONG	0.60		99 GREGORY	0.59
1.50 DUNN	0.51		100 ESPARZA	0.83
1.51 TRAMMELL	0.50		101 LOONEY	0.42
1.52 MERCER	0.50		102 DAVIS	10.53
1.53 BARTOS	0.50		103 ALLEN	0.28
1.54 NEWMAN	0.45		104 CALL	0.48
1.55 ADAMS	0.52		105 FACER	0.36
1A HURST	0.87		106 SNJ BUILDERS	0.49
1A.1 MONARCH UTIL.	0.52		107 CRAJ, LTD.	0.75
1B DAVID'S	2.71		108 BRK CONTRACTORS	2.17
1D SMITH	4.14		109 TOON	1.83
1C BALLARD	0.51		110 ACTON PROPERTIES	42.33
1E.1 DUNN	0.51		111 BEACON	1.62
1E.2 TBL VENTURES	0.49		112 HOLEMAN	0.22
1E.3 PAM'S TOO	1.73		113 MABERY	0.70
1C.1 OVERSTREET	0.53		114 COMMUNITY BANK	2.27*
1C.2 DAVENPORT	0.53		115 ALLTEL	0.31*
1C.3 BRUTON	0.53		TOTAL	631.14 AC
1C.4 CHEYNE	0.53			
2 LIVELY	2.18			
3 MARTIN	15.53			
4 CHARLES JAMES	19.72			
5 RANDAL	3.05			
6 RANDAL	6.95			
7.1 MCFADDEN	0.40			
7.2 HEATHINGTON	0.32			
7.3 HEATHINGTON	0.32			
7.4 HEATHINGTON	0.32			
7.5 DALY	0.32			
7.6 COVER	0.47			
7.7 COVER	0.32			
7.8 HOLLAND	0.42			
7.9 WRIGHT	0.42			
7.10 SMITH	0.42			
7.11 HUGHES	0.42			
7.12 NEAL	0.42			
7.13 BANFIELD	0.42			
7.14 BANFIELD	0.52			
7.19 ALLEN	0.52			
7.20 CAREY	0.42			
7.21 WATSON	0.42			
7.22 ROWLAND	0.42			

CLEAR FORK SURVEYING & MAPPING CO., INC.

"Thou Shalt Not Remove Thy Neighbor's Landmark" Deut. 19:14

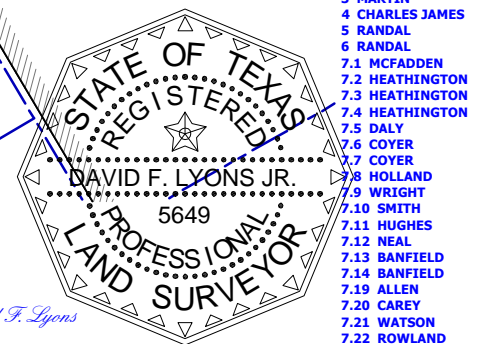
P.O. BOX 249 GLEN ROSE, TX 76043 254.897.3910

NAD83 32.452776758 97.691276738 9H\_SHL NAD83 32.451018503 97.687596007 9H\_PP NAD83 32.442577267 97.681969734 9H\_BHL

NAD83 6848625.21' 2217955.08' 9H\_SHL NAD83 6847994.33' 2219095.35' 9H\_PP NAD83 6844936.96' 2220854.72' 9H\_BHL

NAD27 32.452638034 97.690972304 9H\_SHL NAD27 32.450879710 97.687291682 9H\_PP NAD27 32.442438235 97.681665586 9H\_BHL

David F. Lyons Jr. Well location staked on 10/14/2010, David F. Lyons Jr. R.P.L.S. No. 5649



HOOD COUNTY, TEXAS J. MINETTE SURVEY, ASBTRACT NO. 352 J. MCCOY SURVEY, ASBTRACT NO. 381 A. FARRIS SURVEY, ASBTRACT NO. 179

MILL STREAM UNIT NO. 9H SHL 489' FNWL & 1210' FNEL OF SURVEY SHL 927' FNL & 481' FNWL OF UNIT SHL ELEV. 794' SHL 0.5 MILES N 2° E OF ACTON, TX. PP 330' FNL & 1152' FNEL OF UNIT BHL 109' FSEL & 331' FNEL OF SURVEY BHL 330' FSEL & 1811' FNEL OF UNIT Quicksilver Resources